

MARCH 17,  18, 19 **2021**



2 Year Old
BULL SALE



WELCOME

to our 9th Annual Online Offering!



A big thanks goes out to all of our customers; because of your belief in our program, we've enjoyed nearly 30 years of being your source of Angus genetics. To any new/potential customers; welcome to our program and thanks for taking an interest. As always, we truly appreciate your business!

Our objective here, has been to create the most consistent and uniform group of bulls from top to bottom. Interestingly enough, the most common comment we get from cattlemen has been how impressed they are with the evenness of the pen and how overwhelming it is to sort them. This has been by design. We've dedicated our efforts towards removing variation in our cattle by managing and breeding them all alike. You'll find many 3/4, 7/8, 15/16 and even full blood brothers. This is a huge advantage for those looking to increase predictability and reduce variability within their cattle and take advantage of selling a uniform set of calves-and who doesn't want that?!

This year's group consists of 26 coming two-year olds representing the largest group we've ever assembled and possibly the most even. Like always, these bulls come from mothers who are expected to calve unassisted on grass and forage year-round like our good commercial producers expect their cows to do. These resulting bulls are slow grown for optimal health and never pushed for wild gains. This sale offering is the best of our 2019 calving year. We never sell any bulls prior to this sale so rest assured you are bidding on our very best genetics. These bulls are the cream that has risen after years of selection pressure placed on the mother cows. Every management decision is one where we ask ourselves how this would better our customer's program. From selection pressure for docility, maternal intelligence, udder and foot quality to grazing and wintering hardiness, we strive to align our operation with those producers selecting our bulls.

Please contact us by phone, text, email, through social media or visit our website. We would love to tour you through the bulls, their sisters and mother cows or even just chat about any questions you may have. We are an open book and encourage you to inform yourself as best possible in your next investment.

Respectfully,
Trevor, Cheryl, Brett, Carter Branvold

MARCH 17,  18, 19
2 Year Old
BULL SALE
ONLINE

Videos and Pictures are available online.

Visit:

www.edjeauctions.com



or www.gbtangus.com



Ph: Trevor 306-577-9141, Cheryl 306-435-7785

Box 205

Wawota, SK.

S0G 5A0

Email: gbtangus@sasktel.net

Website: gbtangus.com

The **GBT Angus** Two-Year-Old Advantage:

- all our bulls are calved on grass with zero assistance.
- extra aged bulls will cover twice as many cows or heifers than a yearling bull - economic advantage!
- unlike yearlings, they don't require extra feed and attention after breeding season.
- extra time to scrutinize and cull for imperfections that don't get caught as yearlings.
- our bulls are never pushed in their development. Yes, we could have them weighing 2000 lbs. but choose to make health and longevity a priority before artificial gains.
- many 3/4, 7/8 and 15/16 related bulls. This decreases variability, creating a more uniform calf crop.
- our stringent cow herd selection process ensures commercially important traits like calving ease, calf vigour, fertility, and functionality in a long-lived cow.
- fertility bred in - all our bulls and their dams are the result of a 60-day breeding season.

ABOUT OUR SCORING SYSTEM:

We concentrate a lot of our efforts towards analyzing and discriminating our cattle. Utilize this information to your advantage. Be aware that we never want a customer disappointed in one of our bulls or how they produce. We therefore score them critically.

Udders: Calving on grass is a whole new level of difficult with keeping udders sound. Unlike winter calving, the milk flow comes in hard and fast. With most of our customers calving on grass, we feel it's imperative to be extra diligent with selecting towards cows that have udders that resist early breakdown. We score our cows right at calving to ensure we grade them at full engorgement. This reveals imperfections that tend to be less visible only days later.

5/5 perfect udder and teat structure.

4/5 very ideal quality-future break down unlikely.

3/5 some attachment and or teat placement/size issues but still very functional.

2/5 poor, culling required.

1/5 very poor, nursing assistance required.

Calving Ease: We calve our heifers right along side our mature cow herd out on grass. We only check our herd twice daily, so we expect both our heifers and cows to calve and nurse unassisted. Any females requiring assistance in this regard are marked and culled. Being this ruthless has groomed a herd of cattle that are largely self sufficient.

5/5 very small (<60 lbs.) high degree of confidence to use in heifer breeding programs.

4/5 small (60-75 lbs.) may be used on heifers in low birth herds.

3/5 medium (75-85 lbs.) recommended for cows.

2/5 large (85-100 lbs.) cows only.

1/5 very large (>100 lbs.) castrated.

HEIFER BULLS OR COW BULLS:

When we determine whether a bull receives "heifer bull" status (5/5) or not isn't determined by performance or birth weight alone. We consider calf shape, the cows past track record and the individuals throughout the pedigree. Be aware of your own cow herd though. A herd with already low birth weights or low incidences of calving difficulties are often able to be freer in their selection compared to one that struggles with calving issues. In short, if it's abnormal to assist heifers in your program, don't hesitate to sample a CE:4/5 bull. Alternately, if past experiences prove birth weights and calving issues are an issue, err on the side of caution and stick with the 5/5 bulls on your heifer mating's.

TERMINOLOGY/ABBREVIATIONS:

CE: 5/5 being easiest calving potential. Lower the number equals potentially lower calving ease.

Disposition: 5/5 indicating quietest with lower score indicating less desirable disposition.

AOD: Age of dam in years at time of calving.

Udder: 5/5 indicates highest quality. Lower the number equals less desirable.

NO FREE LUNCH

Since the performance craze hit back in the 70's, our industry has in some form or fashion held onto this bigger, better, faster fascination. It's a fascination that still plagues many systems today. Increasing weaning weights means having to increase milk and growth production which in turn increases cow maintenance requirements. Remember...there is no free lunch.



SINCLAIR PLAINS BOSS 5B02

REF **A**

5B02 02/15/2015 AAA reg#: 18152044 BULL

Sinclair Boss
Sinclair Patriarch 3B47
Sinclair Lady Ida 70C7 2V11

N Bar Emulation Ext A1747
Sinclair Lady Ida 7V19 04F3
Sinclair Lady Ida 04F3 B154

Sinclair Grass Master
Sinclair Lady 6P69 3M18
O C C Great Plains 943G
N Bar Lady Ida S C C 2V11
N Bar Emulation EXT
N Bar Clova Pride U3031
Emulation N Bar 5522
N Bar Lady Ida X2912

CE: +3 BW: +0 WW: +50 YW: +94 MILK: +21

An impressive individual with the trademark Emulation extension and fluid movement. 5B02 is as royally bred as they come, tracing 45 times to the maternal phenom, Emulation 31. The benefits of linebreeding are many and consistency is one trait he shows great promise with. His progeny have a quick growth rate without excessive mature size and pack a genetic maternal punch. His daughters are showing excellent potential for attractive udder design and are weaning solid calves.



GBT X-PLUS 1549

REF **B**

1549 05/26/2015 AAA reg#: 18986503 BULL

Sinclair Emulation XXP
Sinclair X-Plus 1XX30
Sinclair K Bty 5S1 E013

GBT Rolex 002
GBT Ruby Belle 1279
GBT Ruby Belle 088

N Bar Emulation EXT
N Bar Primrose Y3051
Sinclair Idealistic 1R4
N Bar Kinochtry Bty V14951
Leachman Right Time
B B A R Ruby Belle 1134
B B A R Legacy 624
GBT Ruby Belle 782

GBT Ruby Belle 1279
- Dam of 1549

CE: +2 BW: +1.4 WW: +39 YW: +63 MILK: +14

1549 is our replacement for Sinclair X-Plus 1XX30. 1549 stamps his progeny with outstanding predictability. They are all deep chested and extra easy fleshing. The icing on the cake is his ability to add good dispositions and hair coats. 1549 is backed by one of our nicest cows; GBT Ruby Belle 1279. She is double bred to the Ruby Belle cow family and is a combination of her sire: GBT Rolex 1002 (by Leachman Right Time) and maternal grand sire: BBAR Legacy 624. She is a hard working, super easy fleshing, big middle, moderate female with a good udder design and yes, a superb disposition.



GBT Ruby Belle 1842
- Maternal sister and daughter of 1549

CHEZ OF WYE UMF 10824

REF **C**

10824 02/01/2016 AAA reg#: 18627221 BULL

Cyrus of Wye
Quintes of Wye UMF 10502
Queen Mother of Wye UMF 9141

Carter of Wye UMF 8138
Clova of Wye UMF 8996
Clova of Wye UMF 8176

Prince of Malpas
Caltha of Wye
Bonanza of Wye
Queen Mother of Wye 7829
Framework of Wye
Clova of Wye UMF 7931
Landowner of Wye
Clova of Wye UMF 6767

CE: +1 BW: -0.3 WW: +4 YW: +1 MILK: +14

Chez was our pick of the 2017 offering from the storied WYE Angus herd of Queenstown, Maryland. His dam is the fabulous Carter of WYE embryo donor daughter; Clova of WYE UMF 8996. Intriguingly, she is also the mother to our Calum of WYE 10453 bull we purchased back in 2014. We love cattle with consistent production and the 8996 cow is just that. Chez was long, deep, chill natured and smooth as a whip. He also maintained flesh incredibly well while serving his first year as a yearling. Look to Chez influenced genetics to lower your birth weights and frame score. Unfortunately, Chez was lost due to a breeding injury in 2019 so his progeny will be limited.



**GBT
1905**

LOT **1905**

1905 05/08/2019 AAA reg#:Unregistered BULL

Sire Pending DNA Results

MH Winner 932
GBT Cleo1787
GBT Cleo 904

MH Titan 752
MH Mina 53
Badlands Forte 55
KBJ Cleo 621R

AOD: 2 CE: ★★★★★☆ DISP: ★★★★★☆ UDDER: ★★★★★☆

Purebred, unregistered bull. Sells without papers. A moderate framed bull who is a heifers first calf. With a 4/5 calving ease score, this bull could be considered for heifers. Comes from the same cow family as the impressive 1909 and 1918 bulls.



**GBT
PRAIRIE BOSS 1906**

LOT **1906**

1906 05/09/2019 AAA reg#: 19910370 BULL

Sinclair Plains Boss 5B02
GBT Punta Gorda 1703
GBT Ruby Belle 1412

Sinclair Patriarch 3B47
Sinclair Lady Ida 7V19 04F3
GBT Time Up 1216
GBT Ruby Belle 1214
O C C Legacy 839L
B B A R Ruby Majorette 124'96
B B A R Nugget 322
Aitken Acres Jestress 11P

B B A R Legacy 624
GBT Jestress 067
GBT Jestress 772

AOD: 9 CE: ★★★★★☆ DISP: ★★★★★☆ UDDER: ★★★★★☆

Intriguing pedigree here. Sire is the good GBT Punta Gorda 1703 bull who sold through our 2019 sale to Rocking S Ranch in Manitoba. The dam of 1906 is one of our most consistent producing cows. She's produced many front-end sale bulls through the years.



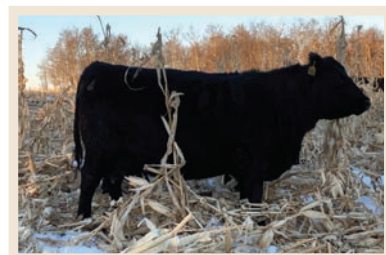
GBT Punta Gorda 1703
- Sire of 1906



GBT Punta Gorda 1709
- Sire of 1935 and maternal brother to 1906



1906



GBT Jestress 1067
- Dam of 1906

GBT PRAIRIE BOSS 1909

LOT 1909

1909 05/09/2019 AAA reg#: 19971790 BULL

Sinclair Patriarch 3B47
Sinclair Plains Boss 5B02
Sinclair Lady Ida 7V19 04F3

B B A R Legacy 624
GBT Cleo 1237
GBT Cleo 904

Sinclair Boss
Sinclair Lady Ida 70C7 2V11
N Bar Emulation Ext A1747
Sinclair Lady Ida 04F3 B154
O C C Legacy 839L
B B A R Ruby Majorette 124'96
Bad Lands Forte 5S
KBJ Cleo 621R



AOD: 7 CE: ★★★★★☆ DISP: ★★★★★☆ UDDER: ★★★★★☆

When we mate Sinclair Plains Boss 5B02 to our Legacy daughters, the pounds produced are impressive. 1909 pushes the scale down as well as any bull in the pen and his beautiful Legacy dam scores very high for udder quality. 1909 is a 3/4 brother and shares the same good Cleo cow family to the 1918 bull.



1237
- Dam of 1909

GBT PRAIRIE BOSS 1911

LOT 1911

1911 05/12/2019 AAA registration # BULL

Sinclair Patriarch 3B47
Sinclair Plains Boss 5B02
Sinclair Lady Ida 7V19 04F3

GBT Locomotive 1478
GBT Cassie 1665
GBT Cassie 723

Sinclair Boss
Sinclair Lady Ida 70C7 2V11
N Bar Emulation Ext A1747
Sinclair Lady Ida 04F3 B154
GBT Locomotive 1239
GBT Cassie 036
BBAR Nugget 322
GBT Cassie 56R



AOD: 3 CE: ★★★★★☆ DISP: ★★★★★☆ UDDER: ★★★★★☆

If retaining females is a priority, 1911 should be marked up high on your list. The first 5B02 daughters in production are showing very nice, quality udders. Bonus to this is the Cassie cow family who are also well known for udder structure and fertility. 3/4 brother to the lot 1915 bull.



GBT Locomotive 1478
- Maternal Grand sire of 1911

GBT PRAIRIE BOSS 1915

LOT 1915

1915 05/14/2019 AAA reg#: 19910373 BULL

Sinclair Patriarch 3B47
Sinclair Plains Boss 5B02
Sinclair Lady Ida 7V19 04F3

GBT Locomotive 1354
GBT Cassie 1573
GBT Cassie 723

Sinclair Boss
Sinclair Lady Ida 70C7 2V11
N Bar Emulation Ext A1747
Sinclair Lady Ida 04F3 B154
B B A R Legacy 624
Willabar Miss Morrison 95S
B B A R Nugget 322
GBT Cassie 56R



AOD: 4 CE: ★★★★★☆ DISP: ★★★★★☆ UDDER: ★★★★★☆

Another Plains Boss, Cassie combination that will treat you well. 1915 is a 3/4 brother to the good 1911 bull.



GBT Locomotive 1354
- Maternal Grand sire of 1915

GBT PRAIRIE BOSS 1917

LOT 1917

1917 05/15/2019 AAA reg#: 19910375 BULL

Sinclair Patriarch 3B47
Sinclair Plains Boss 5B02
Sinclair Lady Ida 7V19 04F3

GBT Transition 1015
GBT Miss Morrison 1224
GBT Miss Morrison 753

Sinclair Boss
Sinclair Lady Ida 70C7 2V11
N Bar Emulation Ext A1747
Sinclair Lady Ida 04F3 B154
B B A R Legacy 624
Bailey's Mayflower 44'06
O C C Legacy 839L
B B A R Miss Morrison 118G

AOD: 7 CE: ★★★★★★ DISP: ★★★★★★ UDDER: ★★★★★★

In our eyes, this guy is pretty darn neat. Phenotypically very complete and genetically very pure. He traces over 45 times to the 1968 breed legend; Emulation 31 and is out of a double bred Legacy daughter. 1917 is a full brother to the nice 1809 bull that sold in last years sale to good repeat customers: Dave and Elaine-they always pick the good ones!



1809
- Maternal brother to 1917



1917



GBT Transition 1015
- Maternal grandsire of 1917



GBT Miss Morrison 753
- Maternal grandam of 1917

GBT PRAIRIE BOSS 1918

LOT 1918

1918 05/15/2019 AAA reg#: 19916313 BULL

Sinclair Patriarch 3B47
Sinclair Plains Boss 5B02
Sinclair Lady Ida 7V19 04F3

B B A R Legacy 624
GBT Cleo 1370
GBT Cleo 0101

Sinclair Boss
Sinclair Lady Ida 70C7 2V11
N Bar Emulation Ext A1747
Sinclair Lady Ida 04F3 B154
O C C Legacy 839L
B B A R Ruby Majorette 124'96
Sinclair Time Out 8P1
GBT Cleo 871

AOD: 6 CE: ★★★★★★ DISP: ★★★★★★ UDDER: ★★★★★★

A stud of a bull here. His dam is as near ideal in type and production as one can get. Superb udder structure and very moderate, feminine, and wedgy. She weans off a high percentage of her body weight on an annual basis. Lots of value exists in 1918. 3/4 brother to the 1989 bull who is also a heavyweight in the pen.



GBT Cleo 1370
- Dam of 1918



1876
- Maternal brother of 1918

GBT 19200

LOT 19200

19200 05/18/2019 AAA reg#: PB Unregistered BULL

Sinclair Patriarch 3B47
Sinclair Plains Boss 5B02
Sinclair Lady Ida 7V19 04F3

Sinclair Boss
Sinclair Lady Ida 70C7 2V11
N Bar Emulation Ext A1747
Sinclair Lady Ida 04F3 B154

"Purebred Unregistered Cow"

AOD: 4 CE: ★★★★★☆ DISP: ★★★★★☆ UDDER: ★★★★★☆

Purebred, unregistered bull. Sells without papers. This bull should gather some fans. He's long and soggy with lots of middle. Good headed with an easy disposition.



GBT EXPECTATION 1922

LOT 1922

1922 05/18/2019 AAA registration # BULL

Sinclair X-Plus 1XX30
GBT X-Plus 1549
GBT Ruby Belle 1279

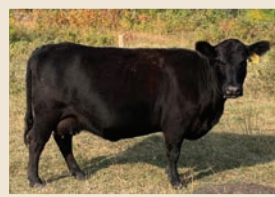
Sinclair Emulation XXP
Sinclair K Bty 5S1 E013
GBT Rolex 002
GBT Ruby Belle 088

GBT Lady Fanny 1464
GBT Lady Fanny 1108

GBT Legacy 973
GBT Lady Fanny 53N

AOD: 5 CE: ★★★★★☆ DISP: ★★★★★☆ UDDER: ★★★★★☆

These GBT X-Plus 1549 progeny carry a degree more fleshing ability and body dimension. 1922 is one that catches your attention with his extra depth and easy-going demeanor. The dam of 1922; 1464 has populated our herd with several quality daughters and grand daughters. 1922 is closely related to the good 1941 bull in this sale.



1631
- Dam of 1941 and Maternal sister to 1922

GBT 1926

LOT 1926

1926 05/18/2019 AAA reg#: PB Unregistered BULL

Sire Pending DNA Results

AOD: 4 CE: ★★★★★☆ DISP: ★★★★★☆ UDDER: ★★★★★☆

Purebred, unregistered bull. Sells without papers. A bull with an excellent head carriage and front end. Very nice disposition as well.



GBT PRAIRIE BOSS 1929

LOT 1929

1929 05/24/2019 AAA reg#: 19910377 BULL

Sinclair Patriarch 3B47
Sinclair Plains Boss 5B02
Sinclair Lady Ida 7V19 04F3

Geis Chief 106'05
GBT M'Brook Lass 784
Spring View M'Brook Lass 1M

Sinclair Boss
Sinclair Lady Ida 70C7 2V11
N Bar Emulation Ext A1747
Sinclair Lady Ida 04F3 B154
Crescent Creek Chief 70J
Geis Ruby 185'96
Glennie Blackman 5F
Glennie M'Brook Lass 30J



AOD: 12 CE: ★★★★★☆ DISP: ★★★★★☆ UDDER: ★★★★★☆

His mother is one of our oldest cows on inventory and again preg checked safe in calf for 2021. She has been very consistent in her production and still sports ideal feet. 1929 may transmit slightly more stature than average.

GBT EXPECTATION 1931

LOT 1931

1931 05/24/2019 AAA reg#: 19910378 BULL

Sinclair X-Plus 1XX30
GBT X-Plus 1549
GBT Ruby Belle 1279

O C C Legacy 839L
GBT Cassie 1288
Bievers Cassie 51F

Sinclair Emulation XXP
Sinclair K Bty 5S1 E013
GBT Rolex 002
GBT Ruby Belle 088
O C C Echelon 857E
O C C Dixie Erica 960E
Leachman Ext 3565
Southolm Cassie 51B



AOD: 7 CE: ★★★★★☆ DISP: ★★★★★☆ UDDER: ★★★★★☆

Truly incredible the disposition these 1549 progeny posses, especially considering how little human interaction they receive. We feel 1549 and his sons and daughters will become a large piece in our program moving forward. 1931 is a pretty darn neat bull. Very complete made with excellent testicular development, full in all areas, great hair coat and a flawless disposition.



Bievers Cassite 51F
-Maternal Grandam
of 1931



1931

GBT CARBON 1933

LOT 1933

1933 05/24/2019 AAA reg#: Pending BULL

Quintes of Wye UMF 10502
Chez of Wye UMF 10824
Clova of Wye UMF 8996

GBT X-Plus 1522
GBT Countess 1766
GBT Countess 1518

Cyrus of Wye
Queen Mother of Wye UMF 9141
Carter of Wye UMF 8138
Clova of Wye UMF 8176
Sinclair X-Plus 1XX35
GBT M'Brooke Lass 784
GBT Countess 827



AOD: 2 CE: ★★★★★☆ DISP: ★★★★★☆ UDDER: ★★★★★☆

Another heifer's first calf. Excellent disposition throughout this cow family. Most Chez sons should work well on first calf heifers. 1933's dam is an own daughter of GBT X-Plus 1522, a bull who sold to Leonard Foster in our 2017 sale.

GBT PRAIRIE BOSS 1935

LOT 1935

1935 AAA reg#: Pending BULL

Sinclair Plains Boss 5B02
GBT Punta Gorda 1709
GBT Jestress 067

Sinclair Plains Boss 5B02
GBT Ruby Belle 1729
GBT Ruby Belle 1465

Sinclair Patriarch 3B47
Sinclair Lady Ida 7V19 04F3
B B A R Legacy 624
GBT Jestress 772
Sinclair Patriarch 3B47
Sinclair Lady Ida 7V19 04F3
Sinclair X-Plus 1XX30
GBT Ruby Belle 1128



GBT Punta Gorda 1709
- Sire of 1935

AOD: 2 CE: ★★★★★ DISP: ★★★★★ UDDER: ★★★★★

A heifer's first calf sired by GBT Punta Gorda 1709 who sold to James Clay in our 2019 sale. Should possess good calving ease on first calf heifers. With Sinclair Plains Boss 5B02 showing up twice in his pedigree, 1935 traces over 90 times to the great maternal phenom, Emulation 31. Emulation 31 is a 1968 model who today, is still known as a sire of calving ease, exceptional maternal traits with daughters excelling in udder quality, longevity, and productivity. He is also well known as the sire of NBAR Emulation EXT's dam.



GBT CARBON 1936

LOT 1936

1936 05/27/2019 AAA reg#: 19910390 BULL

Quintes of Wye UMF 10502
Chez of Wye UMF 10824
Clova of Wye UMF 8996

GBT Locomotive 1478
GBT Cassie 1629
GBT Cassie 1325

Cyrus of Wye
Queen Mother of Wye UMF 9141
Carter of Wye UMF 8138
Clova of Wye UMF 8176
GBT Locomotive 1239
GBT Cassie 036
B B A R Legacy 624
GBT Cassie 723



GBT Locomotive 1478
- Maternal grandsire of 1936

AOD: 3 CE: ★★★★★ DISP: ★★★★★ UDDER: ★★★★★

Balanced, complete and attractive best describes this Chez son. Take time to evaluate this guy as he will develop into an impressive herd sire. Add to his resume his terrific young Cassie mother who weaned a nice replacement quality heifer this year.



GBT CARBON 1937

LOT 1937

1937 05/28/2019 AAA reg#: 19910391 BULL

Quintes of Wye UMF 10502
Chez of Wye UMF 10824
Clova of Wye UMF 8996

GBT Locomotive 1354
GBT Gertie 1536
GBT Gertie 1149

Cyrus of Wye
Queen Mother of Wye UMF 9141
Carter of Wye UMF 8138
Clova of Wye UMF 8176
B B A R Legacy 624
Willabar Miss Morrison 95S
Sinclair Jipsey King 9JP40
Happyvale Gertie 9G



GBT Locomotive 1354
- Maternal grandsire of 1915 and 1937

AOD: 4 CE: ★★★★★ DISP: ★★★★★ UDDER: ★★★★★

Again, look to these Chez sons to offer potential calving ease for heifer breeding programs. We had excellent luck with him consistently keeping birth size low.



GBT EXPECTATION 1941

LOT 1941

1941 05/28/2019 AAA reg#: Pending BULL

Sinclair X-Plus 1XX30
GBT X-Plus 1549
GBT Ruby Belle 1279

Sinclair Emulation XXP
Sinclair K Bty 5S1 E013
GBT Rolex 002
GBT Ruby Belle 088

GBT Lady Fanny 1631
GBT Lady Fanny 1464

GBT Lady Fanny 1108



AOD: 3 CE: ★★★★★☆ DISP: ★★★★★☆ UDDER: ★★★★★☆

Now here is a cool looking individual. Clean in his lines with an attractive look about him. He exhibits muscle shape and pushes the scale down well for his frame size. Note the Lady Fanny cow family. This is one of our originating cow lines that we started with almost 30 years ago! Stay-ability is heritable and something to seek out. Utilize bulls like this to build a genetic base with. I'm confident he will serve most any breeding program well.

GBT CARBON 1945

LOT 1945

1945 05/30/2019 AAA reg#: 19916310 BULL

Quintes of Wye UMF 10502
Chez of Wye UMF 10824
Clova of Wye UMF 8996

Cyrus of Wye
Queen Mother of Wye UMF 9141
Carter of Wye UMF 8138
Clova of Wye UMF 8176
B B A R Legacy 624
GBT Blossom 743
GBT Locomotive 1239
GBT Mayflower 012

GBT Locomotive 1239
GBT Mayflower 1651
GBT Mayflower 1456



AOD: 3 CE: ★★★★★☆ DISP: ★★★★★☆ UDDER: ★★★★★☆

The guess work is largely removed when considering this fella. The cows that catch our attention are not the one hit wonders. Rather, they are the ones who consistently replicate quality with every progeny they produce. Case in point, 1945 is a full blood brother to our 1827 junior herd bull. Plus, she's weaned off another bull calf who looks to be a keeper as well. Also consider the udder quality value of 4.5/5. This is upper echelon rating in our herd. 3/4 brother to the 1956 bull.



GBT Locomotive 1239
- Maternal grandsire of 1945 and 1956



1827
- Full brother to 1945



1651
- Dam of 1945

GBT CARBON 1950

LOT 1950

1950 05/31/2019 AAA reg#: 19910393 BULL

Quintes of Wye UMF 10502
 Chez of Wye UMF 10824
 Clova of Wye UMF 8996

Sinclair X-Plus 1XX30
 GBT Rosebud 1508
 GBT Rosebud 804

Cyrus of Wye
 Queen Mother of Wye UMF 9141
 Carter of Wye UMF 8138
 Clova of Wye UMF 8176
 Sinclair Emulation XXP
 Sinclair K Bty 5S1 E013
 Bad Lands Forte 5S
 Triple D Rose 1K



AOD: 4 CE: ★★★★★☆ DISP: ★★★★★☆ UDDER: ★★★★★☆

This guy kind of breaks the Chez mould. When Cheryl and I were processing the bulls, we commented on how much this guy looks like a 1549 son. Interestingly enough, his dam is a paternal sister to our 1549 herd sire. So needless to say, this guy carries that same 1549 look of extra rib and softness.



Sinclair X-Plus 1XX30
 - Maternal grandsire of 1950

GBT CARBON 1955

LOT 1955

1955 06/05/2019 AAA reg#: 19910394 BULL

Quintes of Wye UMF 10502
 Chez of Wye UMF 10824
 Clova of Wye UMF 8996

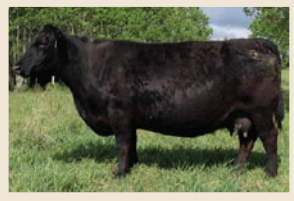
Sinclair Jipsey King 9JP40
 GBT Belle 1124
 GBT Belle 54R

Cyrus of Wye
 Queen Mother of Wye UMF 9141
 Carter of Wye UMF 8138
 Clova of Wye UMF 8176
 Dunlouse Jipsey Earl E161
 Sinclair Enchantress 3S42
 B B A R Nugget 322
 CFS Belle 64N

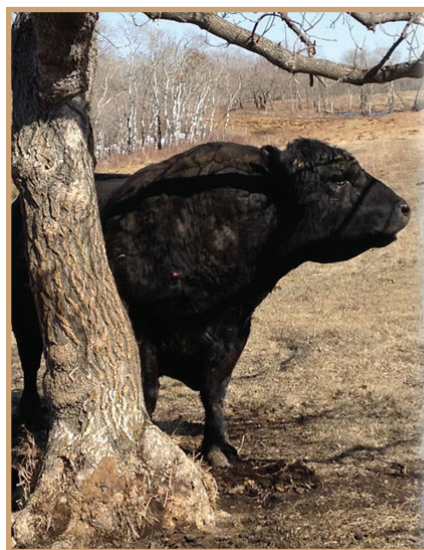


AOD: 8 CE: ★★★★★☆ DISP: ★★★★★☆ UDDER: ★★☆☆☆☆

One thing Chez did very well for us was put a stamp on his progeny. They are so consistent in their frame size, muscle shape, type and kind. I'm excited to have a bunch of his daughters coming into production. I'm sure they will be the ideal, no fuss kind of mother cows. This 1955 bull displays those qualities well. Nice round muscle shape and ideal size for ranchers looking to create self sufficient brood cows.



GBT Belle 54R
 - Maternal granddam of 1955



GBT 
Angus



GBT CARBON 1956

LOT 1956

1956 06/05/2019 AAA reg#: 19910395 BULL

Quintes of Wye UMF 10502
 Chez of Wye UMF 10824
 Clova of Wye UMF 8996

GBT Locomotive 1239
 GBT Belle 1628
 GBT Belle 1124

Cyrus of Wye
 Queen Mother of Wye UMF 9141
 Carter of Wye UMF 8138
 Clova of Wye UMF 8176
 B B A R Legacy 624
 GBT Blossom 743
 Sinclair Jipse King 9JP40
 GBT Belle 54R

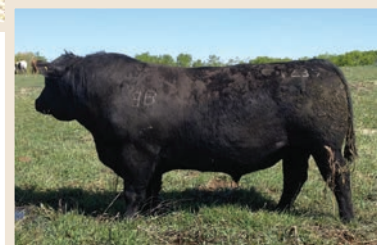


AOD: 3 CE: ★★★★★☆ DISP: ★★★★★☆ UDDER: ★★★★★☆

3/4 brother to the good 1945 bull earlier on in the catalog. Again, Chez traits on display here, with moderation of frame and compact design. Sire of this guys dam is our impressive Locomotive 1239 bull.



1844 - Maternal brother to 1956



GBT Locomotive 1239
 - Maternal grandsire of 1956

GBT CARBON 1960

LOT 1960

1960 06/06/2019 AAA reg#: 19910392 BULL

Quintes of Wye UMF 10502
 Chez of Wye UMF 10824
 Clova of Wye UMF 8996

GBT Forte 969
 GBT Cassie 1626
 GBT Cassie 1331

Cyrus of Wye
 Queen Mother of Wye UMF 9141
 Carter of Wye UMF 8138
 Clova of Wye UMF 8176
 Bad Lands Forte 5S
 Bailey's Mayflower 44'06
 Sinclair X-Plus 1XX30
 GBT Cassie 010

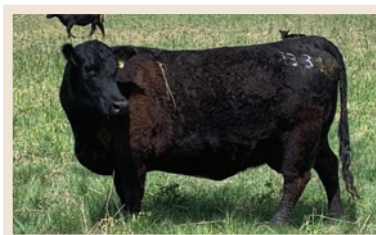


AOD: 3 CE: ★★★★★☆ DISP: ★★★★★☆ UDDER: ★★★★★☆

A little different paperwork maternally. This guys mom is a brilliant uddered, stunning GBT Forte 969 daughter from the Cassie cow family. Interesting note: 1960's grand dam is the dam of the 1978 bull in this sale.



1626
 - Dam of 1960



GBT Cassie 1331
 - Dam of 1978, Grandam of 1960



GBT Forte 969
 - Maternal grandsire of 1960

GBT EXPECTATION 1970

LOT 1970

1970 06/11/2019 AAA reg#: 19910387 BULL

Sinclair X-Plus 1XX30
 GBT X-Plus 1549
 GBT Ruby Belle 1279

 Bad Lands Forte 5S
 GBT Mayflower 1350
 GBT Mayflower 855

Sinclair Emulation XXP
 Sinclair K Bty 5S1 E013
 GBT Rolex 002
 GBT Ruby Belle 088
 Papa Forte 1921
 Bad Lands Princess 63K
 B B A R Legacy 6128
 GBT Mayflower 29N

AOD: 6 CE: ★★★★★☆ DISP: ★★★★★☆ UDDER: ★★★★★☆

Some wow factor in this fella. Typical 1549 traits on display here with his soft look, deep, deep rib structure, and good hair. His mom is a powerful, big capacity Forte daughter. I'm sure this guy will be marked up on many cattlemen's books.



Bad Lands Forte 5S
 - Maternal
 grandsire of 1970



1970

GBT EXPECTATION 1978

LOT 1978

1978 06/18/2019 AAA reg#: 19910388 BULL

Sinclair X-Plus 1XX30
 GBT X-Plus 1549
 GBT Ruby Belle 1279

 Sinclair X-Plus 1XX30
 GBT Cassie 1331
 GBT Cassie 010

Sinclair Emulation XXP
 Sinclair K Bty 5S1 E013
 GBT Rolex 002
 GBT Ruby Belle 088
 Sinclair Emulation XXP
 Sinclair K Bty 5S1 E013
 Leachman Right Time
 Biever's Cassie 51F

AOD: 6 CE: ★★★★★☆ DISP: ★★★★★☆ UDDER: ★★★★★☆

Intriguing, pure maternal, herd building pedigree, stacking Ruby Belle and Cassie families. 1978 is a product of half sibling mating through our herd sire, Sinclair X-Plus 1XX30. Of special note: 1978 is a maternal brother to ours and Running Rabbit Ranches herd sire, GBT Winner 1724.



GBT Winner 1724
 - Maternal brother to 1978



GBT Cassie 1331
 - Dam of 1978



Sinclair X-Plus 1XX30
 - Sire of Ref Sire 1549 and Maternal grandsire of 1950 and 1978

GBT 1986

LOT 1986

1986 AAA reg#: Pending BULL

Sire Pending DNA Results

BBAR Legacy 624
GBT Blossom 1280
GBT Blossom 774

OCC Legacy 839L
BBAR Ruby Majorette 124'96
BBAR Nugget 322
GBT Blossom 14L

AOD: 7 CE: ★★★★★☆ DISP: ★★★★★☆ UDDER: ★★★★★☆

Second youngest bull in the offering from another Legacy daughter. Take note of his calving ease score of 4/5. He could possibly be used with some heifers.



1807
- Maternal brother to 1986

GBT PRAIRIE BOSS 1989

LOT 1989

1989 07/01/2019 AAAreg#: 19971791 BULL

Sinclair Patriarch 3B47
Sinclair Plains Boss 5B02
Sinclair Lady Ida 7V19 04F3

B B A R Legacy 624
GBT Lady Ann 043
GBT Lady Ann 715

Sinclair Boss
Sinclair Lady Ida 70C7 2V11
N Bar Emulation Ext A1747
Sinclair Lady Ida 04F3 B154
O C C Legacy 839L
B B A R Ruby Majorette 124'96
Geis Chief 106'05
Standard Hill Lady Ann 5K

AOD: 9 CE: ★★★★★☆ DISP: ★★★★★☆ UDDER: ★★★★★☆

Although he is the youngest among the bunch, he's a heavyweight on the scale. The Plains Boss, Legacy combination is a dynamite cross for gain ability. His dam provided us well, weaning 9 calves in 9 years before injuring her hip this past summer. 3/4 brother to Lot 1909 and 1918.



Watch for updated DNA and pedigree results at
www.edjeauctions.com
and www.gbtangus.com





SHARING INFORMATION:

In this fast-paced world of change, it's often a daunting task to find time to keep up. We'd like to invite you to join us on our website or through social media (we currently utilize Facebook, Twitter, Instagram, WhatsApp and Facebook Messenger) or just a good old email, text, or phone call still works too! We've found these platforms invaluable for sharing information, discussing possibilities, and getting quality answers to questions. We've been fortunate to be included in chat groups with other like-minded producers who share industry leading management techniques from summer and winter grazing methods, cattle selection, cover cropping, seeding, harvesting methods and on.

FERTILITY:

These bulls represent a base of mother cows diligently selected for fertility and who are adapted to a lower input environment. Cows unable to keep pace are not shuffled to a secondary calving season or otherwise given a second chance. This has enabled the cows to be naturally sorted for the optimal amount of milk and growth that our system will tolerate.



MEET OUR RANCHERS



Q: What does sustainability mean to you?

A: "We use the term *regenerative agriculture*, because our goal on the ranch is to protect the land and regenerate it for increased productivity—better plants and better cattle," Cheryl says. "My family farmed this land for over 130 years. Now it's our job to implement modern techniques and continue to develop a healthier soil system."

Q: When you were a kid, did you think this is what you'd be doing?

A: "As a young girl, you're not necessarily groomed to take over the family farm," Cheryl says. "I became a veterinary technician, and then happily made my way back to farming when Trevor and I married." As for Trevor, he says caring for cattle has always been his calling.

Q: What do you hope people understand about ranchers?

A: "Ranchers are like doctors and lawyers in the way that we're constantly practicing our trade," Trevor says. "We're always trying to do what's right and making adjustments for the better as we go."

**The Branvold Family,
Wawota, Saskatchewan, Canada**



When Cheryl Branvold was young, she joked with her parents that one day she'd build a house in their backyard. For her, the family farm would always be home. Today, down the road is close enough, where Cheryl, her husband, Trevor, and their two sons, Brett and Carter, now care for the cattle. Raising beef and improving the land: it's a family tradition that dates back to 1888.



One of many ranching families raising the best Angus beef.

"We're trying to do better for the environment and provide better beef for the world."



From our family ranchers to your family table.™

CertifiedAngusBeef.com

BIDDING/ONLINE VIEWING

If you are new to the online bidding process, familiarize yourself early by going to www.edjeauctions.com. Here, you will find our sale bull listing with pictures, videos, pedigree links and brief notes of each bull on offer. If you require help getting set up to bid, please contact EDJE or ourselves.

TERMS/DELIVERY/BOARDING/INSURANCE/LIABILITY/HERD HEALTH:

Terms: Terms for the sale are cash, cheque or e-transfer to be paid upon receipt of invoice following sale. Funds are in Canadian dollars. U.S funds will be accepted at current rate of exchange.

Delivery: Free delivery is offered within 400 km radius of GBT Angus on any purchases of cattle. Any additional mileage will be charged at \$1/km. As things tend get busy during May, we prefer to complete deliveries prior to May.1st. Please discuss delivery arrangements with us.

Boarding: GBT will keep your purchase free of charge until April 1,2021. Any required time thereafter, a charge of \$3/day/animal will be charged. We strongly encourage bulls being left at GBT Angus to be insured as we will not be responsible for death or injury. Please discuss your boarding requirements with us.

Insurance: We strongly encourage you to place insurance on your purchases immediately after the sale as we are not responsible for any death or injury whatsoever.

Liability: GBT Angus; Trevor, Cheryl, Brett, Carter Branvold or any other person involved with them assume no responsibility for injury, damage or death to any person, possessions or belongings while visiting or handling cattle on or off our premises.

Herd Health: All cattle selling have been vaccinated, dewormed, and passed a veterinarian inspection and semen evaluation.



GBT Angus
Trevor & Cheryl Branvold
Box 205
Wawota, SK, S0G 5A0



Sign up for Online bidding at:



www.edjeauctions.com

